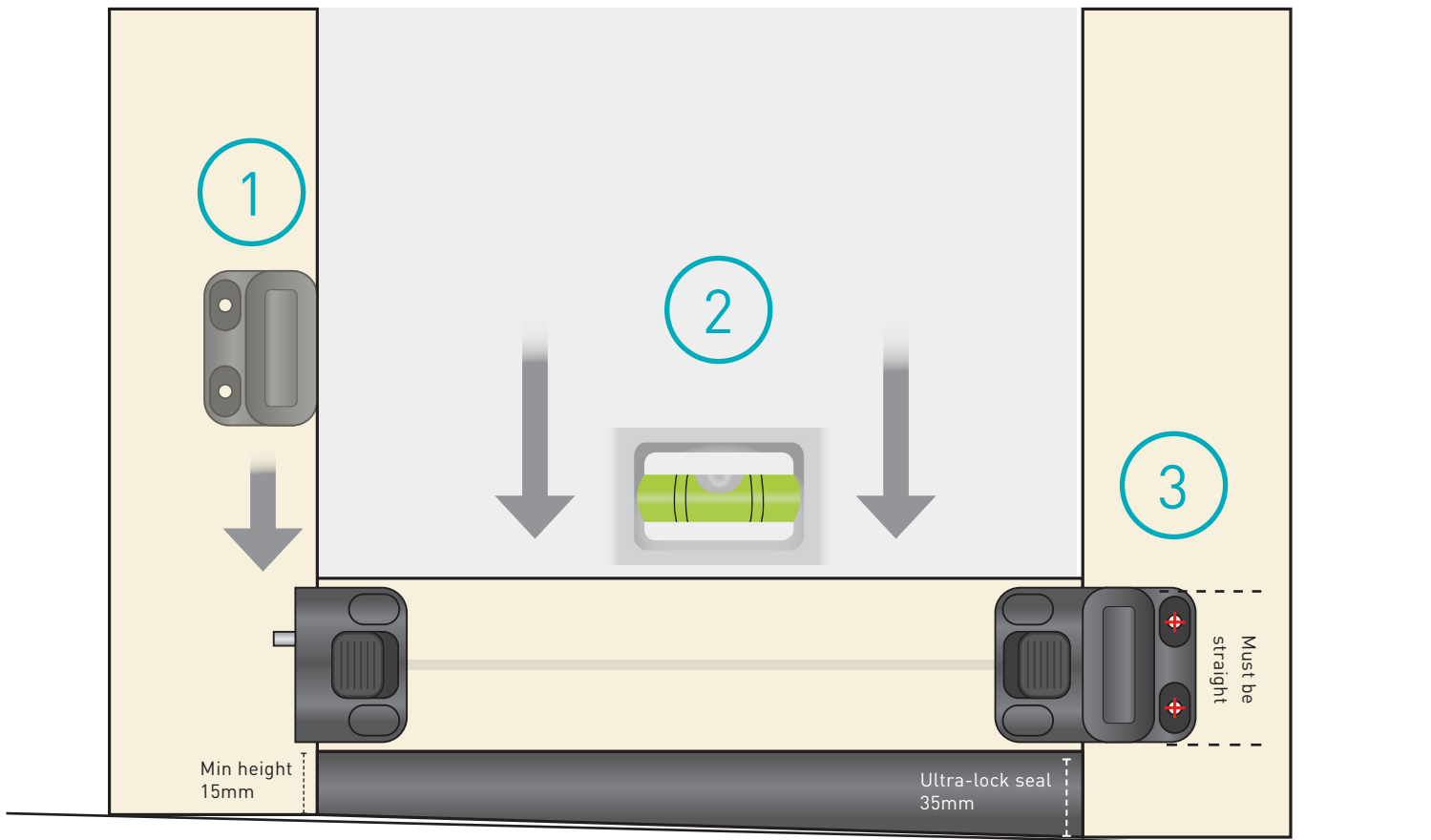


# ZIPSCREEN WITH ULTRA-LOCK

Install in three easy steps



1

Slide Side Channel Latch onto Weight Bar Body until coupled.

2

Drive blind down until the Ultra-Lock Seal covers any gaps from uneven floor levels.

\*Ensure bottom of weight bar is minimum 15mm (20mm recommended) above highest point.

3

Mark, Pre-Drill and Secure Side Channel Latch

TEST / OPERATE (ensure motor is in correct mode)

For further information please see our complete Zipscreen Installation Manual available via the website.