

VARIOSCREEN®

RETRACTABLE SUNROOF



HELIOSHADE
COLOUR DESIGN

*over 120 standard
frame colours*



 BEAUFORT WIND SCALE

Rated up to Category 6

 5 YEAR WARRANTY

 **helioscreen**
Intelligent Sun Control Solutions®

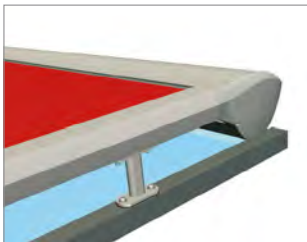
VARIOSCREEN®

RETRACTABLE SUNROOF

DESIGN & FUNCTIONALITY

With its counter tension system, the VARIOSCREEN® retractable sunroof is typically used to shade generously sized, square and rectangular glass areas or outdoor pergolas. The installation slope doesn't provide any challenge with a variety of brackets to suit almost any installation type.

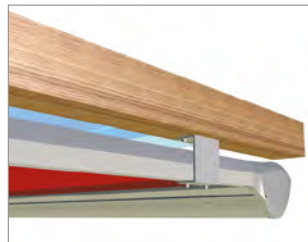
The awning is extended by means of an integrated positive lift, which guarantees a well presented taut skin in any position.



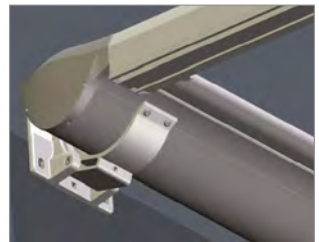
Standard fix



Side fix



Top fix



Wall bracket

THE TECHNOLOGY

154mm high and 235mm wide, the stylish and compact full cassette head box protects the skin and the motor from any weather factors.

The extension of the awning takes place through the integrated positive lift (power-spring mechanism in the roller tube), which tightens the skin in any position and makes the awning remarkably resistant to gusts and gales for the entire life of the system (no coil springs or gas struts to replace ever!). Due to small lateral fabric deduction measurements, the VARIOSCREEN® (even coupled systems) offers minimal light gaps while the optional integrated side gutter profiles also add extra protection from the elements on wet days.



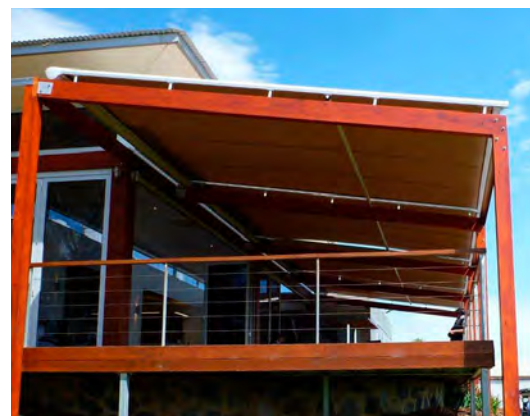
Single system



Coupled system

COUPLED SYSTEMS

Due to the small lateral fabric deduction measurements, light gaps are virtually non-existent. A real plus point for the VARIOSCREEN®.

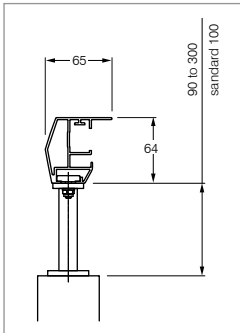


SYSTEM DETAILS

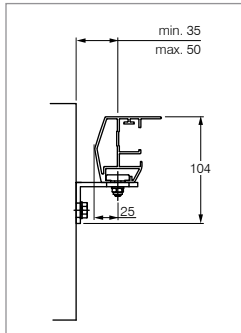
VARIOSCREEN®

TESTING

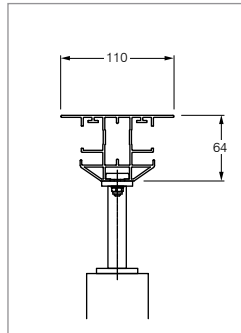
Max width	6,000mm	BEAUFORT WIND SCALE – Category 6 Equivalent to handling 20-27 knot winds or 40-50km/hr. The Beaufort Wind Scale is an international system of reporting accurate wind speeds.
Max projection	6,000mm	
Max size	25sqm	
Coupling system	Endless systems can be coupled together side-by-side	
Installation angle	0-90° (min 14° for water run-off)	
Standard operation	Remote or switched motors	
Fabric colours	Over 100 fabric colours	
Frame colours	Over 120 Dulux & custom powdercoat colours	
Sensors	Optional wind, rain, sun, timeclock sensors possible	



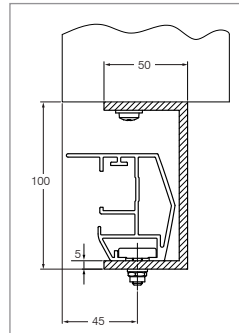
Standard fix
(Also available with
tilting head)



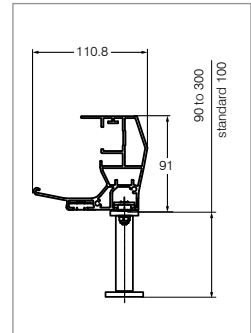
Side fix



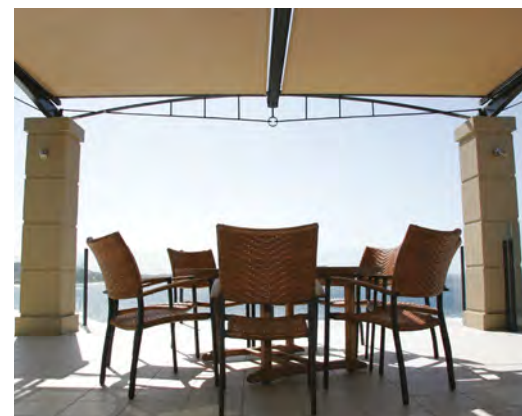
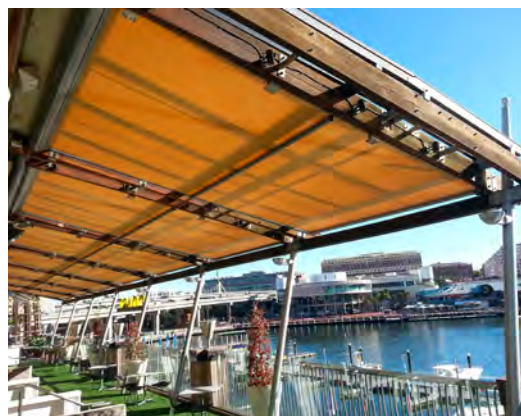
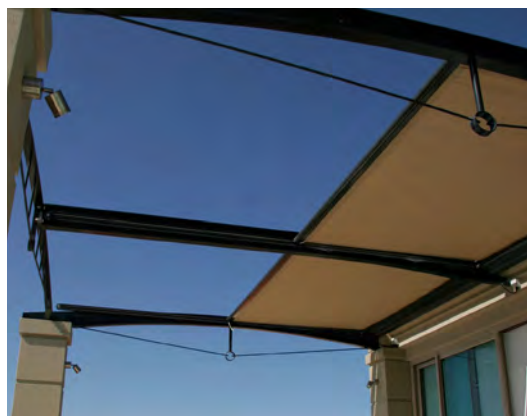
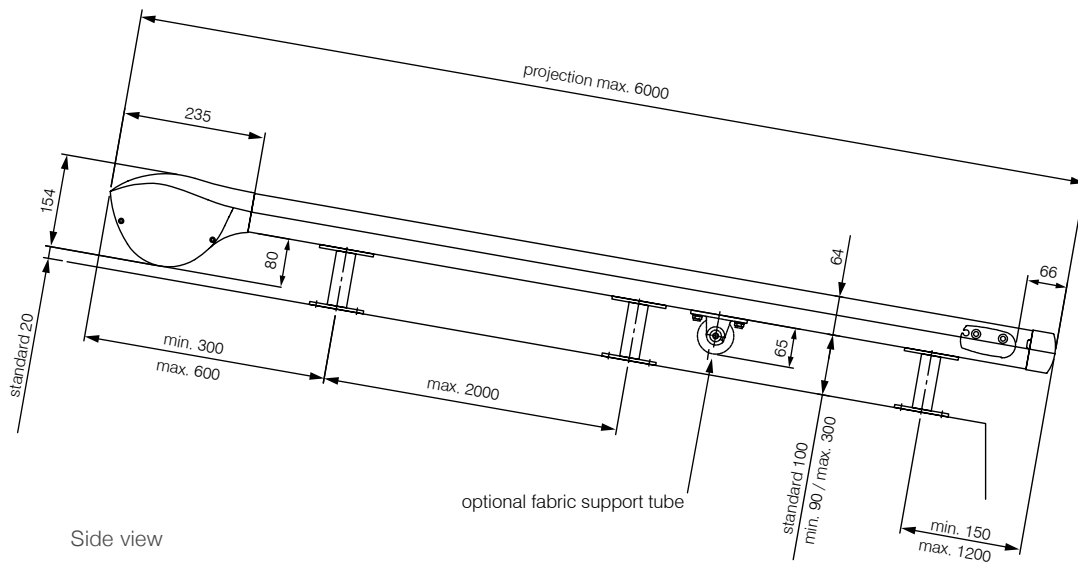
Central guide rail for
coupled systems



Top fix



Optional gutter rail





HELIOSHADE® AWNINGS

UNMATCHED PERFORMANCE FOR COMMERCIAL APPLICATIONS

The Helioscreen team have a proven reputation for outstanding performance when it comes to commercial awning projects. Offering an extensive range of products with local support and next generation solutions for over a quarter of a century is why Helioscreen as a company is synonymous with quality and high-caliber service across Australia and New Zealand.

Using only the finest materials available from around the world each component is selected to exceed expectations. When coupled with precision engineering, innovation and the latest in advanced technology, Helioscreen awning systems have clearly proven to withstand the test of time.

Local assembly ensures precision results are made to order, and offers efficient turnaround times for production and after-market service. Production of our custom made textiles is done in-house with the latest innovative technology and we offer a choice of over 120 Dulux powdercoat colours at no extra charge. This guarantees the best aesthetic results for each system. Furthermore, commercial grade powdercoating is also available for prestigious projects.

Used nationwide in landmark hospitality venues including bars, restaurants, hotels, clubs and renowned commercial buildings,

the Helioscreen range has been the selection of choice for many of Australia's leading architects, designers and builders over the past 25 years. Other commercial applications can be found at shopping centres, airports, apartment complexes, resorts, marinas, libraries, museums and universities.

Working to set new standards across our industry in functionality, performance and design, provides us with the opportunity to incorporate our intelligent sun control solutions towards long term sustainability by reducing energy consumption and contributing to an environmentally greener future.

Helioshade external projects include:

Westfield Shopping Centre's, Coke-a-Cola Sydney, Melbourne Blood Bank, Cockel Bay Wharf, Jaguar Motors, Bupa Health, Toowoomba Shopping Centre, Barossa Valley Vineyards, Sydney University, Jones Bay Wharf, Audi Sydney, Virgin Lounge, Newcastle Hospital, Hastings St Noosa, St Josephs College Brisbane, Austereo Melbourne, Salthouse Cairns, Toyota Adelaide, Perth Library, Woolloomooloo Finger Wharf, Top Ryde Shopping Centre, Melbourne Rowing Club, Adelaide Oval, Northgate Hobart, VW, Darling Island Apartments, Stocklands and Harley Davidson.



SUNTECA'S INDOOR AND OUTDOOR RANGE

-  90% Reduced Heat Radiation
-  Windsensor Retractor
-  5 Year Warranty
-  Powered by Somfy 5-year motor warranty

Includes: Roller Blinds, Roman Blinds, Panel Glides, Blackouts, External Screens, Awnings, External Venetians, and Retractable Roof Systems.



Scan QR code for more info

SUNTECA Pty Ltd – Dealers Australia Wide

www.awnings.com.au | sales@blinds.com.au | Phone: 1300 853 518

 **helioscreen**[®]
Intelligent Sun Control Solutions[®]