

# SUNTECA

## COCOON

### Full Cassette Folding Arm Awning



**The Cocoon is a compact full cassette folding arm awning. Beautiful curves and minimal lines ensure suitability in any modern design application.**

The Cocoon awning is German engineered and includes the Spanish *Docril* fabric.

This awning has a powder coated aluminium outer shell providing advanced corrosion protection.

The heavy duty Cocoon folding arms have a high spring tension ensuring that the awning fabric remains taut.

# Cocoon Folding Arm Awning Specifications

## Robust Front Bar:

The strong double chamber extruded aluminium front bar provides a protective seal to the cassette when the awning is retracted.

## Fabric:

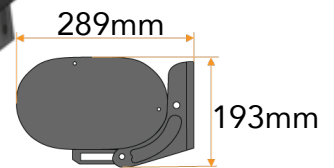
*Docril* fabrics are coated with *Teflon* and have high resistance to water, temperature, corrosion and stress cracking. Rot proof thread is used in fabric stitching to ensure durability. Up to 100% UV protection.

## Cassette

Low profile design makes for a tight close.

## Arms

Unique multi angle adjustment arm connector (0- 30 degrees).



**Closed Full Cassette** ensures the arms and fabric remain fully protected when closed.

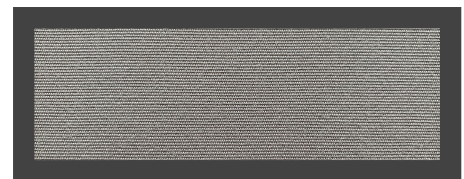


## Operation: Electric (with remote)

Electric *Dooya* Motor with manual override.

## Available Models:

Cassette in Anthracite (Dark Charcoal) and Fabric in Grey  
Please contact us to check other sizes and colours.



## Available sizes:

Width		Projection
3500	x	2500 mm
4000	x	2500 mm
4000	x	3000 mm
4500	x	3000 mm
4500	x	3500 mm
5000	x	3500 mm

**SUNTECA**

Bryn Williams

[bryn@blinds.com.au](mailto:bryn@blinds.com.au)

0450492804